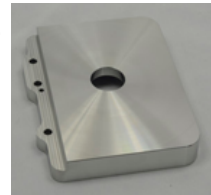


MANUAL

Technics SL-1000R Option Plate

MH-10S1000R

Small accessories :
socket screw M5 20mm x 3



GLANZ

1. Tonearm removal



2. Flutter removal



Flutter



Turn over

3. Cabinet removal



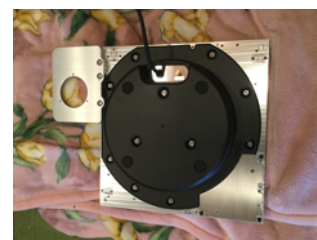
Loosen the
socket screw



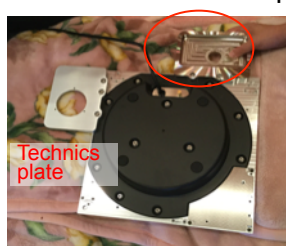
Lift the cabinet



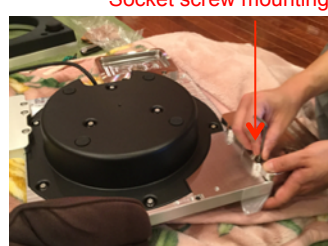
With the cabinet removed



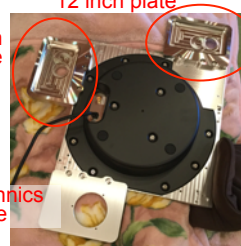
4. 10 inch plate mounted on the right 90 degree of the technics plate and 12 inch plate mounted on the front of the technics plate



10 inch
plate



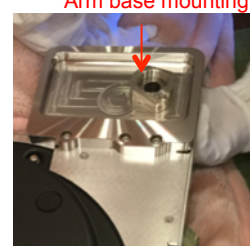
Socket screw mounting



12 inch plate

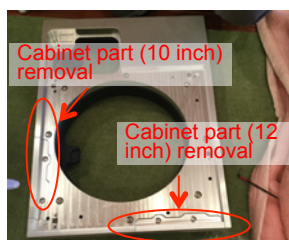
10 inch
plate

Technics
plate



Arm base mounting

5. Cabinet mounting



Cabinet part (10 inch)
removal

Cabinet part (12 inch)
removal

Zoom



here 12 inch is



Cover the Cabinet and
tighten the socket screw



Turn over

6. Completion



12 inch plate
and base

10 inch plate
and base



Flutter mounting



Tonearm



10 inch tonearm